



CAPABILITY STATEMENT



EXPERTS IN WATER

Your local irrigation experts. With decades of experience in the industry, we identify, advise and implement the best water solution for you.

Our dedicated team is highly qualified in irrigation design, supply and installation, and able to assist on projects of any size. We are passionate about every project we take on and ensure you get the results you need. Our clients trust us to give expert advice ranging from residential to agricultural, industrial and commercial.

HISTORY

Locally owned and operated, Aquawest was founded in 2005 and in the 15 years since has grown to encompass an expansive footprint across NSW including branches in Dubbo, Narromine, Tamworth and Gunnedah, with sales and service representatives in Scone, Mudgee and Bathurst.

Led by directors Kerry Field, James Gibson, Brett Abrahams and Todd Owens – who together have a combined total of more than 100 years in the industry – Aquawest is a dedicated team of pumping and irrigation specialists.

Our branches have also grown to carry a wide range of spare parts and accessories and we pride ourselves on being able to supply a range of equipment to meet the needs of any job. We work in a wide range of agricultural and industrial sectors, some of our company highlights include:

- Council Water supply and Pump stations
- Bore pump stations from small domestic to large Irrigation bores
- Commercial sporting fields for council
- Dust suppression and dewatering Systems for mines
- Effluent disposal systems for Mines and Councils
- Stock water reticulations systems up to 300km long with Multiple pump stations, tanks and troughs
- UV and chlorination's systems for waste water reuse in irrigation systems
- Feedlot water supply and Cooling facilities
- Centre pivot and lateral move broadacre irrigation systems
- Parkes and garden reticulation systems
- Golf course and racecourse irrigation systems
- Large scale industrial and commercial reticulation systems
- Domestic water supplies and pressure systems
- Solar pumping systems for bores and dams



SOLUTIONS



IRRIGATION

Innovative technologies and systems for all scales of agricultural and industrial businesses irrigation needs. We offer a range of tried and proven, quality designed and manufactured products that are built to perform better in the field every day.



PUMPS

Pumps are an essential water management solution, and our extensive knowledge will take the confusion out of your decision making. We are confident in our available range of pumps, and offer on and off-site advice so you can be sure you're choosing the right fit



WATER STORAGE

For water management, choosing the right tank will be one of the best investments you make. Aquqwest offers a range of tanks varying in size, brand, colour and material. When choosing a rainwater tank, you want one designed and built to exacting standards for enduring quality and style.



STOCK WATER SYSTEMS

Aquawest can quote, design, supply and install all your water requirements using only quality services and materials.



DESIGN AND CONSTRUCTION

Our team have decades of experience in hydraulic design and irrigation layout. We will design your system to suit your irrigation requirements using the most efficient irrigation principles. Each system design will take into account the topography, soil type and crops you will be growing.



BORE TESTING

Aquawest provide service work for all bore pumps including diagnosing faults, pull ups and repairs. Water from bores is a valuable resource and contributes significantly to your water requirements. Bore water can be used for domestic users as well as stock water and irrigation.



SERVICING AND REPAIRS

We offer service, repair and maintenance both in house and on site. Combined pump repair experience of over 50 years, our servicemen have the solutions to all your water troubles. Our workshop is equipped to handle and diagnose all types of pumps and pressure tanks. We offer same day repairs in house, or if you are unable to make it to us, we can come to you.



PARTS AND ACCESSORIES

We stock a wide range of parts and accessories needed for pumping and irrigation. With hundreds stocked in house, our vast range is sure to include exactly what you need.



TURF & GARDEN IRRIGATION

We work on a range of projects, but turf irrigation is definitely a large component of what our clients need. Irrigation for green spaces can be confusing, whether you are thinking of implementing a new system or wanting to update an existing one. We are here to help from the first design to implementation and maintenance.

EQUIPMENT

Aquawest run a comprehensive range of plant and equipment that is used in day to day operation and project. Below is plant available from our branches, with the fleet constantly evolving:

SERVICE VEHICLES AND TRUCKS

- FSV1400 Crane truck with 4 tone Unic Running rope Crane
- NPR300 Service truck and small Crane
- NPR200 Service truck
- NPR300 tipper
- 5 Toyota Hilux Service vehicles
- 2 x Toyota Landcruiser service vehicles

EXCAVATION EQUIPMENT

- T450 Bobcat skid steer with attachments
- RT45 trencher
- RT115 Trencher
- CR305 5 tone excavator
- E26 Bobcat 2 ½ tone excavator
- E20 Bobcat 2 tone excavator
- T450 Bobcat Skid steer loader
- V100 Vermeer Hydro excavation unit
- Dingo Trencher and range of plant

WELDING EQUIPMENT

- 12 x Polyethylene Butt and electrofusion welders

WELDING EQUIPMENT

- Crusader and Wellmaster Bore lifting equipment
- Submersible test pumps – Range 2 – 80 l/sec. from up to 300m deep
- 45kva Genset for site and Bore testing power supply



CLIENTS

Our experience and expertise has allowed us to work with many councils, mines, businesses and pastoral companies in our local communities:



50+



highly skilled and
equipped staff

10,012



total projects completed



PROJECTS

We are proud of the projects our team delivers. Coordination of staff, contractors and delivery drivers is a key area we focus on, making sure that quality and safety are not compromised. Project managers are assigned to all projects, and available for contact 7 days a week from all interested parties that may be involved in any of our projects.

COMPLETED PROJECTS FOR SATISFIED CLIENTS:

NAME - Tamworth Regional Council Bicentennial Park And Regional Playground Precinct - Groundwater Irrigation System

LOCATION - Bicentennial Park Kable Avenue Tamworth

CLIENT NAME - Tamworth Regional Council



DESCRIPTION - Grundfos borehole submersible pump. Supplying 6 litres per second through a 160mm poly mainline to 2 x underground concrete storage tanks - totaling 240,000 litres and installed with a new car park over the top. Grundfos submersible pump station inside tank supplying 20 litres per second for existing irrigation system via a new 160mm poly mainline. The objective of the project is to integrate the existing irrigation network into a groundwater supply system, utilising onsite bore and sprinkler arrangement. The project involved design, supply, construct and commission a system to use groundwater throughout the playing fields and recreational areas - saving the use of treated town water.

COMPLETED PROJECTS FOR SATISFIED CLIENTS:

NAME - Tamworth Regional Council Town Water Supply

LOCATION - Tamworth

CLIENT NAME - Tamworth Regional Council

DESCRIPTION - Water for truck filling to be used for road and civil works, designed to save the precious town treated water supply. We implemented a new bore supplying 6 litres per second, Grundfos borehole pump filling an Aquamate 244,000 litre steel tank reservoir that supplies an automatic truck filling station at 12 litres per second to be used for sports field irrigation at later date.



year track record



on time delivery

COMPLETED PROJECTS FOR SATISFIED CLIENTS:

NAME - Old Gnomery Bore Scheme

LOCATION - Goodooga 2012

CLIENT NAME - 10 Various Landholders

DESCRIPTION - Design and installation of 150km stock water supply scheme incorporating 10 landholders, 100 tanks and 250 troughs.



NAME - Major Stock Water Scheme

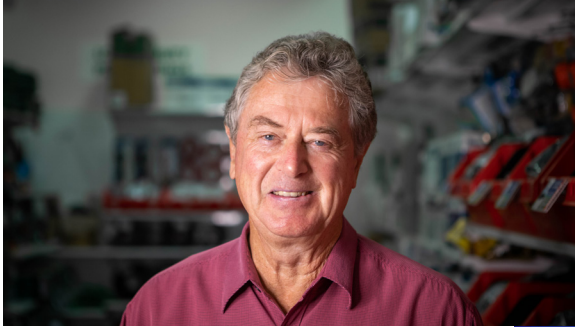
LOCATION - Warren 2015/16

CLIENT NAME - Paraway Past Co

DESCRIPTION - Design and installation of Major stock water scheme including 3 new 60 kl per day solar pumps on new bores, two electric pump stations, 120km pipeline with 40 tanks and 100 trough sites.



MEET THE TEAM



KERRY FIELDS - Director

Kerry is a Western NSW local with strong project experience in pipe & cap bore schemes, centre pivot and lateral move systems, sub-surface drip systems, industrial and agricultural pumping applications. Evident through his successful career, and his strong rapport amongst suppliers and loyal customers, Kerry is an extremely valued industry expert and the proud Managing Director of the company since its inception.



JAMES GIBSON - Director

James is a true industry specialist with almost three decades of experience working in the irrigation profession. With a passion for all things irrigation, James' enthusiasm is an asset. Specialising in on farm, residential and large commercial developments, it's no wonder his clients are always left satisfied. James proudly manages the Western operations including our Dubbo branch and Mudgee representative.



BRETT ABRAHAMS - Director

Brett has always had a passion for honest advice and expert knowledge of water solutions. His expertise in irrigation and water reticulation makes Brett a highly sought after professional and his value to the industry and his clients is evident through his continuing success. Brett has been a director for over a decade and proudly manages the Northern operations including our Tamworth and Gunnedah branches and Scone representative.



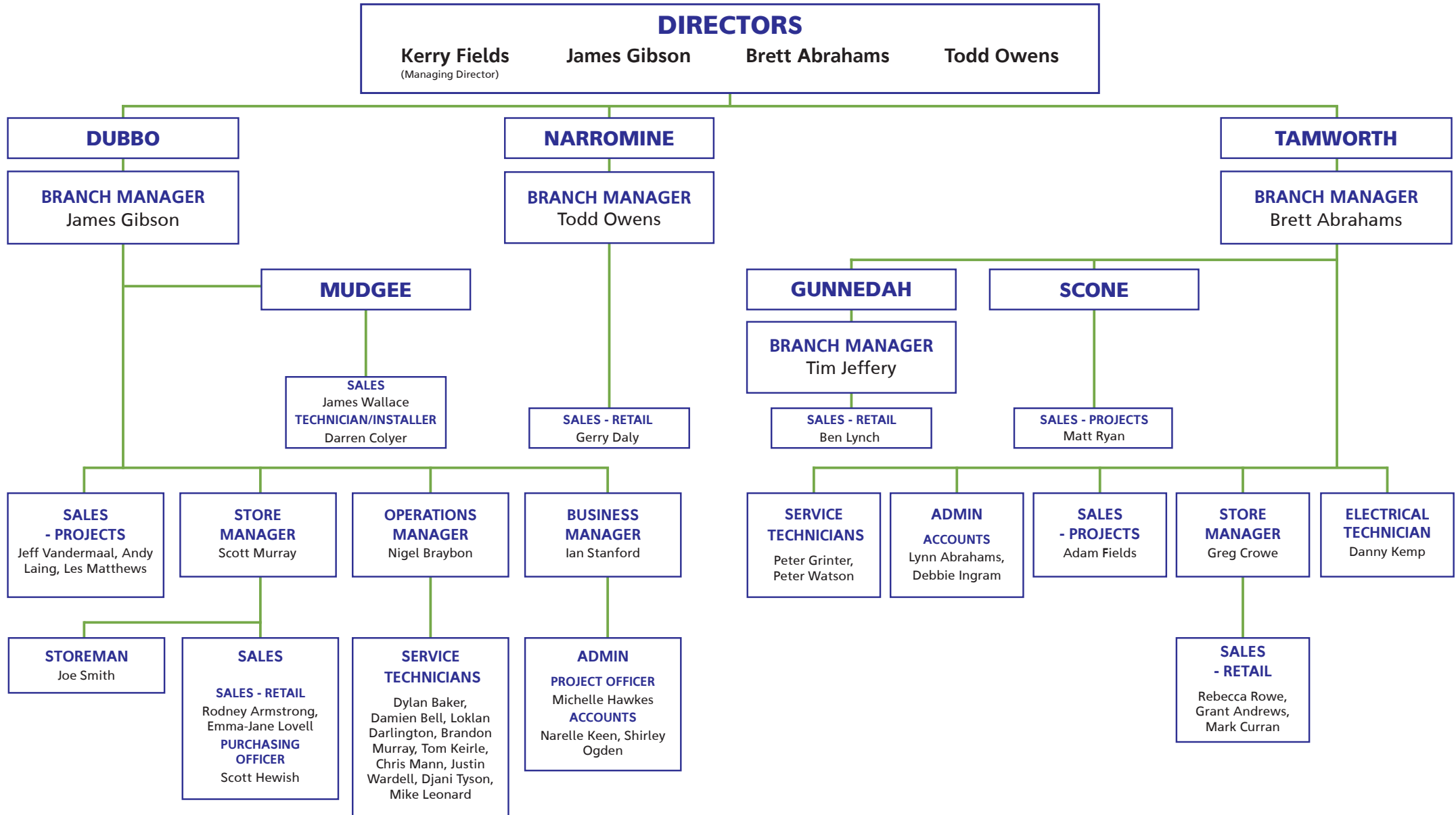
TODD OWENS - Director

Todd brings a vast knowledge of the WHSR and QA requirements for major projects, with a reputation for building strong rapport with clients and staff alike. An experienced project manager, Todd was involved as a site foreman on the Narromine to Tomingley pipeline, which is a key example of the skill and insight he offers to our projects. Todd has been with Aquawest since 2013 and as a new director is proudly managing the Narromine branch and its associated projects.

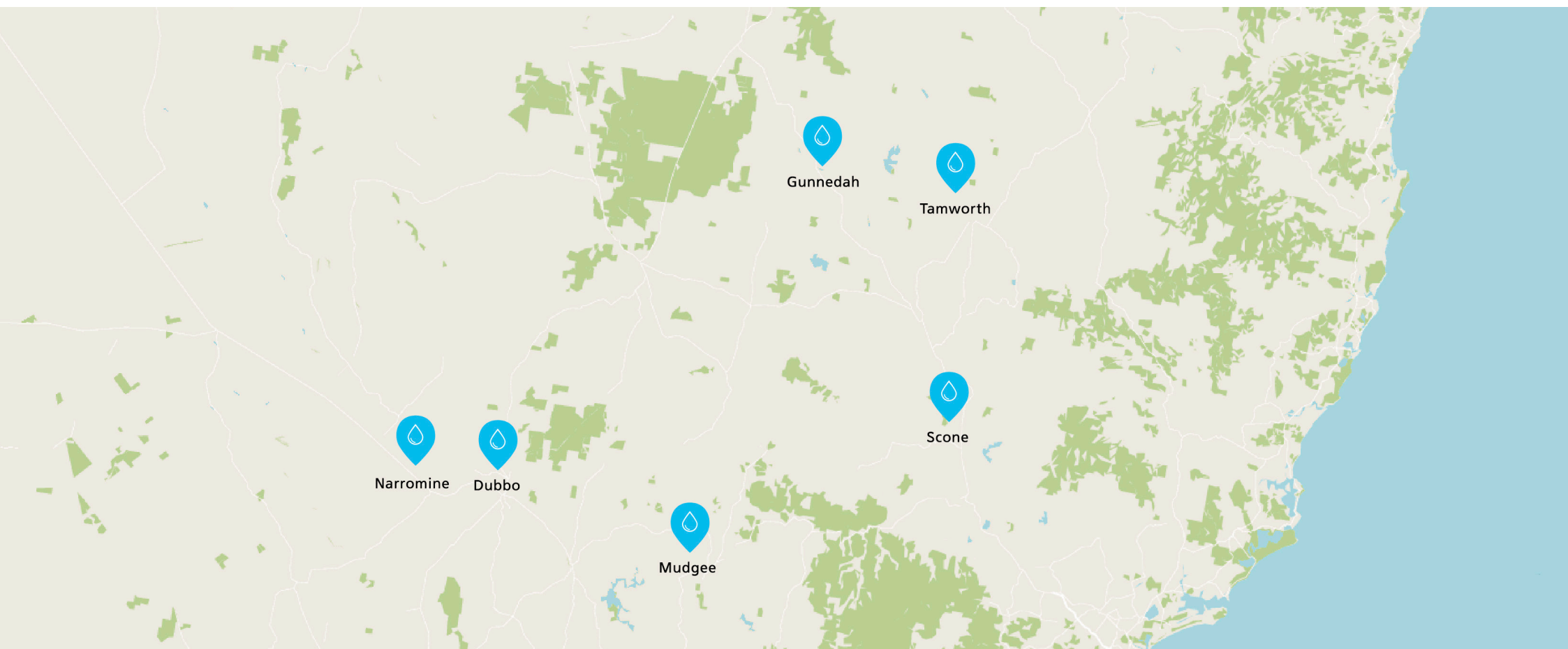


PUMPING & IRRIGATION SPECIALISTS

ORGANISATION CHART



OUR LOCATIONS



Dubbo: 41 Douglas Mawson Rd, NSW, 2830
(02) 6882 7988

Gunnedah: 7 Warrabungle St, NSW, 2380
(02) 6742 5020

Mudgee: NSW, 2850
0427 290 324

Narromine: 40-42 Dandaloo Street, NSW, 2821
(02) 6889 7375

Scone: NSW, 2337
0448 303 333

Tamworth: Jewry St & Cnr Avro, West Tamworth, NSW, 2340
(02) 6762 3033



CONTACT US

aquawest.com.au

Dubbo • Narromine • Mudgee
Tamworth • Gunnedah • Scone